

440

1426/1

276/1/2

2750/5

1433

1434

2752/2/1

251/2

513K

2752/10

1889

1888/2

1888/1

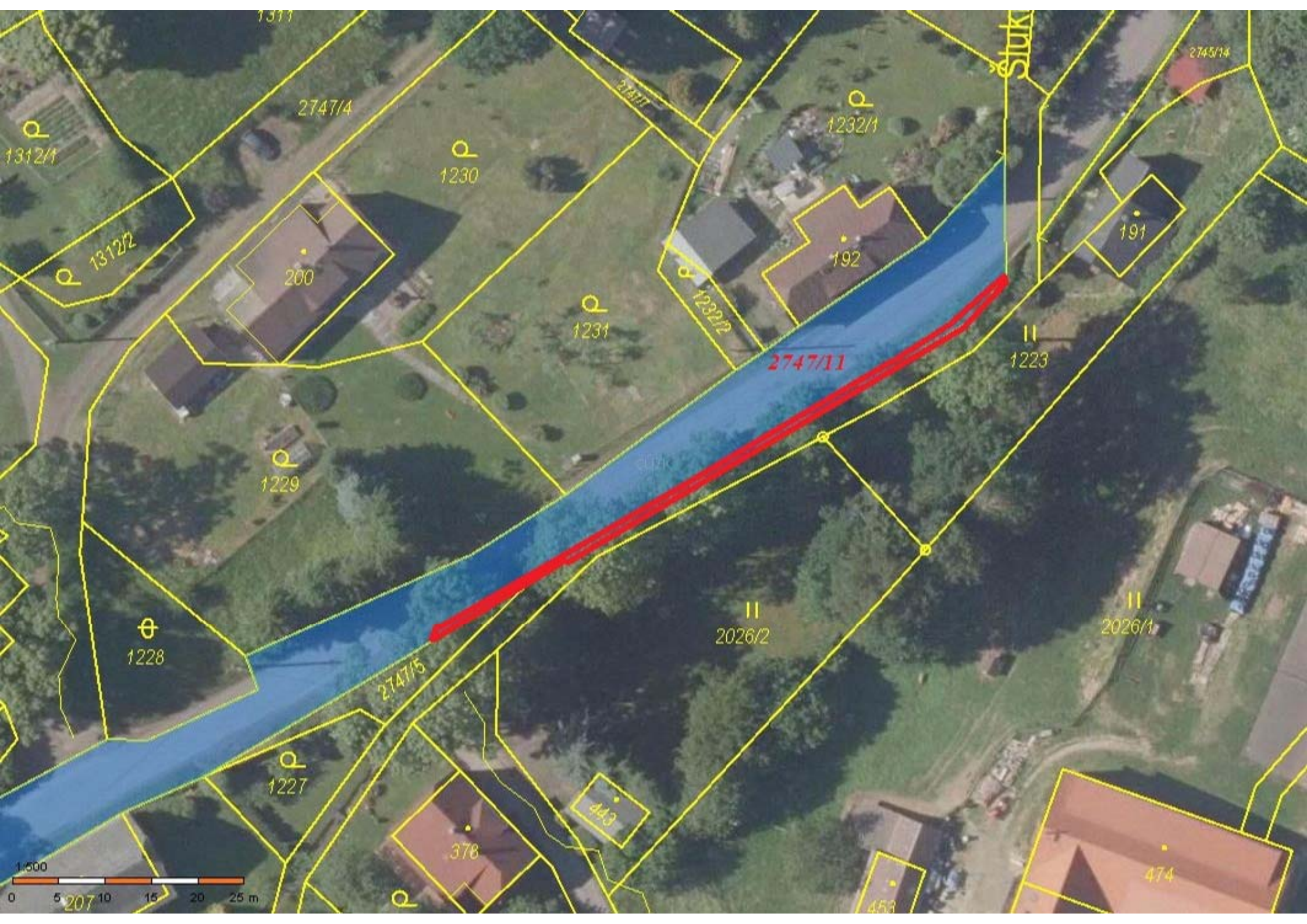
2752/9

3006/2

1886

tok





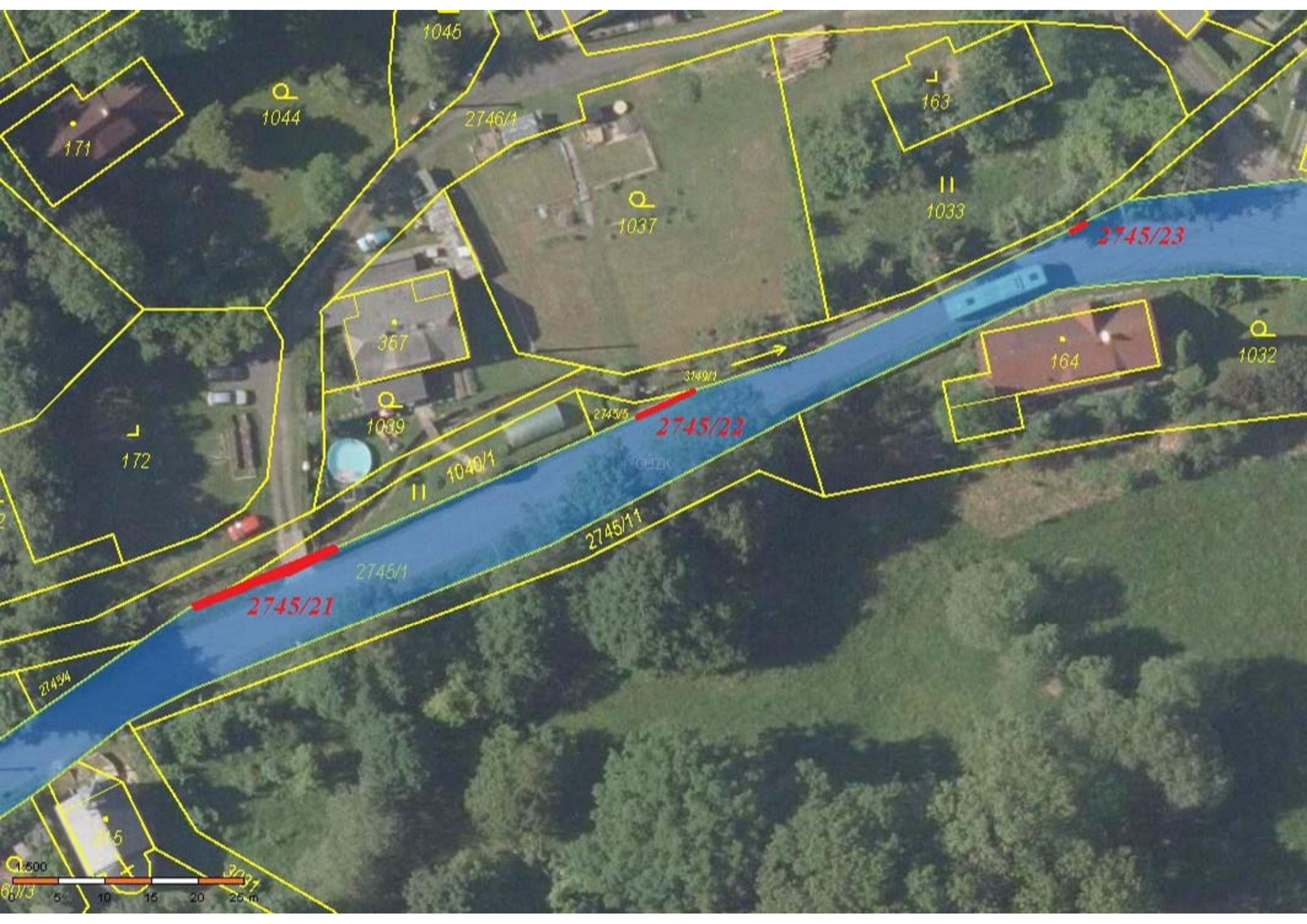
1:500  
0 5 10 15 20 25 m



Štuknovský potok

2745/19







779

778

1010/1

409

2742/3

2742

2742/4

2745/8

2743

153

1013

